

## **Xlink Quick Start Guide**

This document is intended for eCommerce customers who have had Xlink setup and configured. Its is a quick start guide intended for the use of uploading products and downloading orders.

### **Introduction**

#### **What is Xlink?**

Xlink is connection software it links your Mamut to your webshop.

Automatically it can update stock and prices from your Mamut to your web shop whilst also downloading orders and customers on a regular basis. You can even choose to auto-invoice orders.

By using Xlink in most circumstances you do not need to use the shop administration system, simply download your orders to Mamut and use the power of Mamut for invoicing.

What are the minimum requirements ?

You can run Xlink on any machine where Mamut is installed. It does not run on x64 systems at this time.

## Login

Login with your username and password. Xlink will link to a live licensing server to validate your credentials.

If you do not have an Xlink account or password please contact [support@excommerce.com](mailto:support@excommerce.com)



The image shows a login dialog box for XLINK. At the top, the XLINK logo is displayed in orange and blue, with the text "Powered by eXcommerce" below it. Below the logo, there are two input fields: "User name" with the placeholder text "yourlink@yoururl.com" and "Password" with a masked password represented by seven dots. At the bottom of the dialog box, there are two buttons: "OK" and "Cancel".

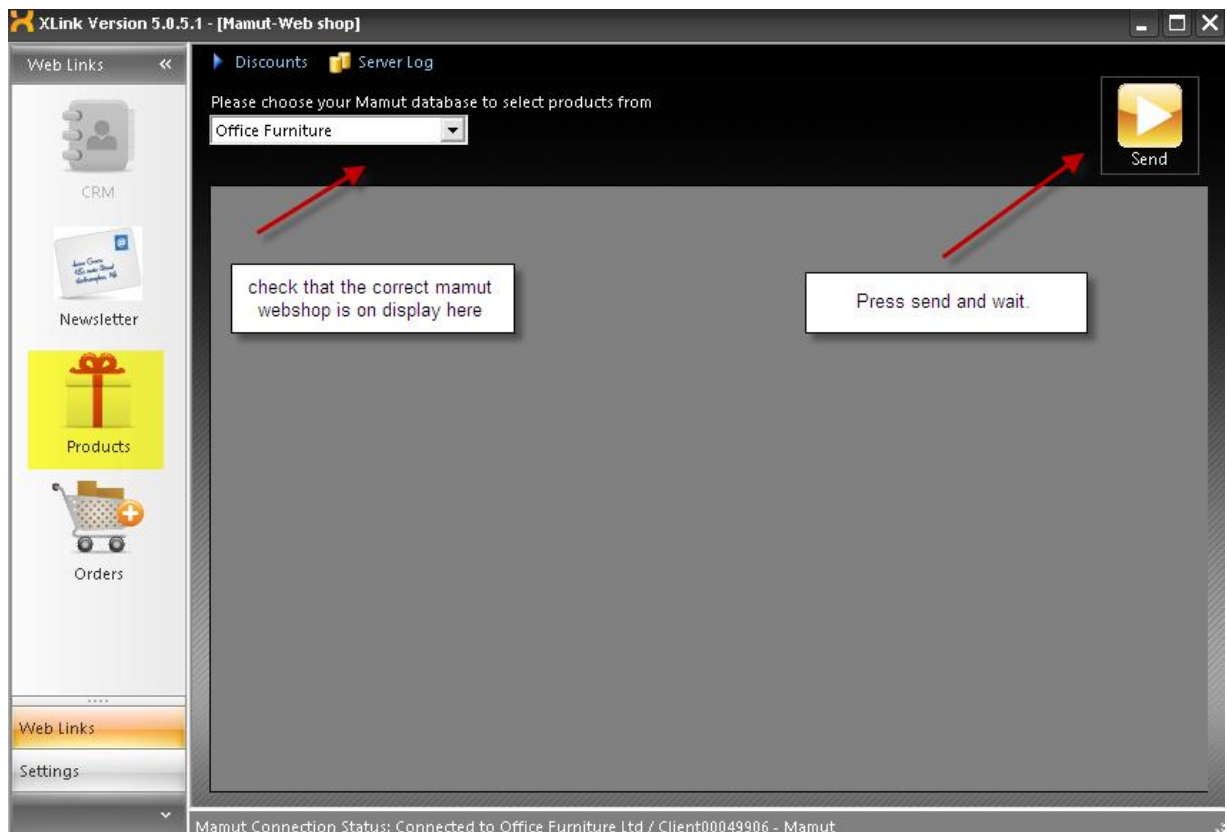
## Send products

Choose Products on the menu , the products page will load.

Automatically your Mamut webshop should be on display in the box:



Choose send to send all products and images.



## Download Orders

Choose Orders from the menu

Choose download to download orders to Mamut

XLink Version 5.0.5.1 - [My Web Orders]

Web Links <<

My Web Orders Total Amount on New Orders : £0.00

Total Amount of Orders : 7

Date	Contact	Email	Total
20/10/2008	Erik Brustad	erik@excommerce.com	
13/03/2009	Erik Brustad	erik@excommerce.com	
13/03/2009	Erik Brustad	erik@excommerce.com	
14/03/2009	Erik Brustad	erik@excommerce.com	
20/03/2009	Erik Brustad	erik@excommerce.com	
24/03/2009	Christian Osther	christian@excommerce.com	
23/04/2009	Erik Brustad	erik@excommerce.com	

Download

Choose Download to download orders

Mamut Connection Status: Connected to Office Furniture Ltd / Client00049906 - Mamut

Once orders have been downloaded the Xlink will confirm to the webshop and the order will be marked as downloaded.

An order reference to the shop order number will be added in the Mamut order reference area:

Web Order (Store Settings > Orders)

Selected All

Orders Orders

Excel Export XML Export HTML Export CSV Export Text Export QuickBo

Print Invoices Print Credit

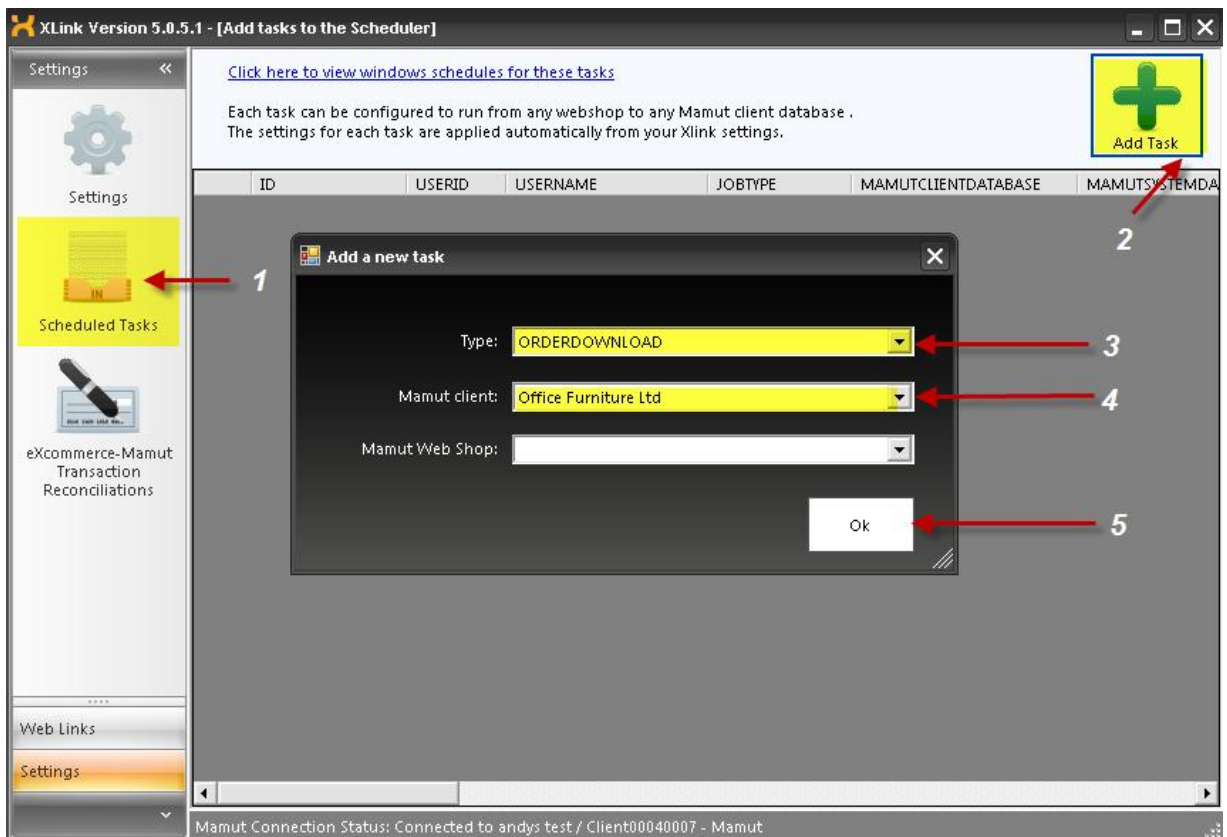
Edit	Order ID	Customer	Subtotal	Order Date	Date Shipped	Payment Type	Pay State	Referrer	Order Details	Delete	Select	All it invo
	17	Erik Brustad (ebrustad) erik@excommerce.com Ask A Question	£479.30	04/06/2009	Not yet shipped	Cash on Delivery (COD)	unpaid		Order Details	<input checked="" type="checkbox"/>	<input type="checkbox"/>	No

Mamut :

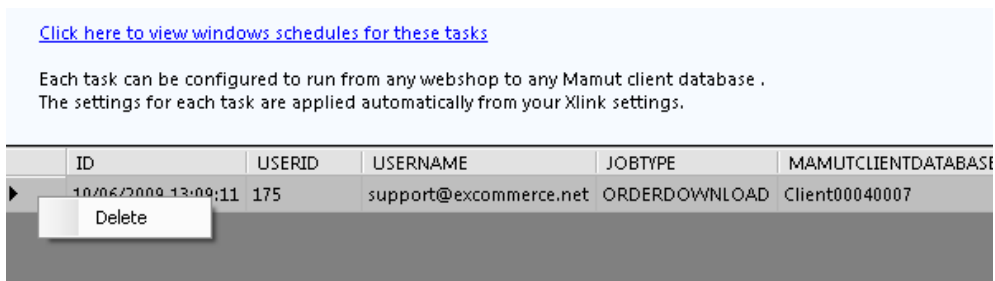
Payment terms	VISA
Project	(none)
Our ref.	(none)
Your ref.	andy smith
Reference	www_17

## Create a task to download orders automatically

1. Click scheduled tasks
2. Click Add task
3. To schedule order download choose the Type Order download
4. Choose the Mamut database to download to.
5. Click ok.




To delete the task select the full line from the left most column then right click , delete




## Add a windows task to schedule the new XLink task

Click on “Click here to view windows schedules for these tasks”

[Click here to view windows schedules for these tasks](#) 

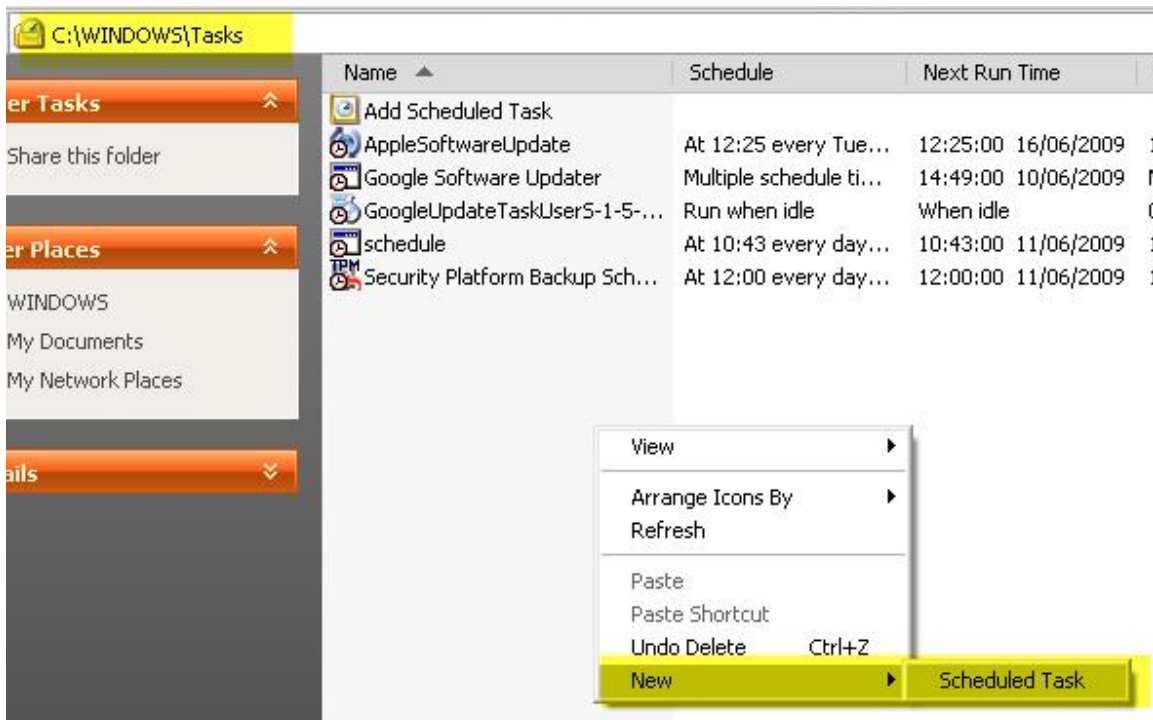
Each task can be configured to run from any webshop to any Mamut client database .  
The settings for each task are applied automatically from your XLink settings.

 Add Task

ID	USERID	USERNAME	JOBTYPE	MAMUTCLIENTDATABASE	MAMUTSYSTEMC
10/06/2009 13:09:11	175	support@excommerce.net	ORDERDOWNLOAD	Client00040007	0004

A windows opens at c:\windows\tasks

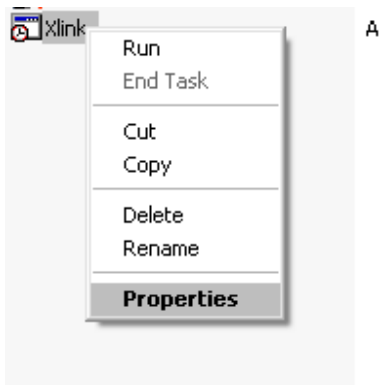
right click and create a new task as below:



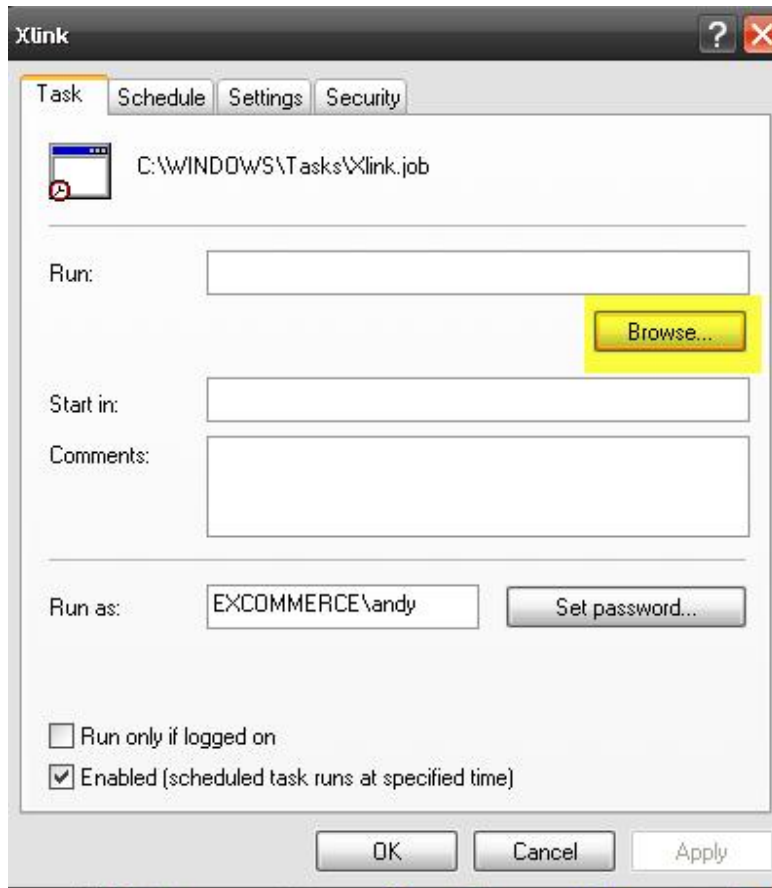
The screenshot shows the Windows Task Scheduler interface. The left pane displays the folder path C:\WINDOWS\tasks. The main pane shows a list of tasks with columns for Name, Schedule, and Next Run Time. A right-click context menu is open over the 'New' option, which is highlighted in yellow. The 'New' option has a sub-menu arrow pointing to the right, and the sub-menu is visible, showing 'Scheduled Task' as the selected option.

Name	Schedule	Next Run Time
Add Scheduled Task		
AppleSoftwareUpdate	At 12:25 every Tue...	12:25:00 16/06/2009 1
Google Software Updater	Multiple schedule ti...	14:49:00 10/06/2009 M
GoogleUpdateTaskUser5-1-5-...	Run when idle	When idle C
schedule	At 10:43 every day...	10:43:00 11/06/2009 1
Security Platform Backup Sch...	At 12:00 every day...	12:00:00 11/06/2009 1

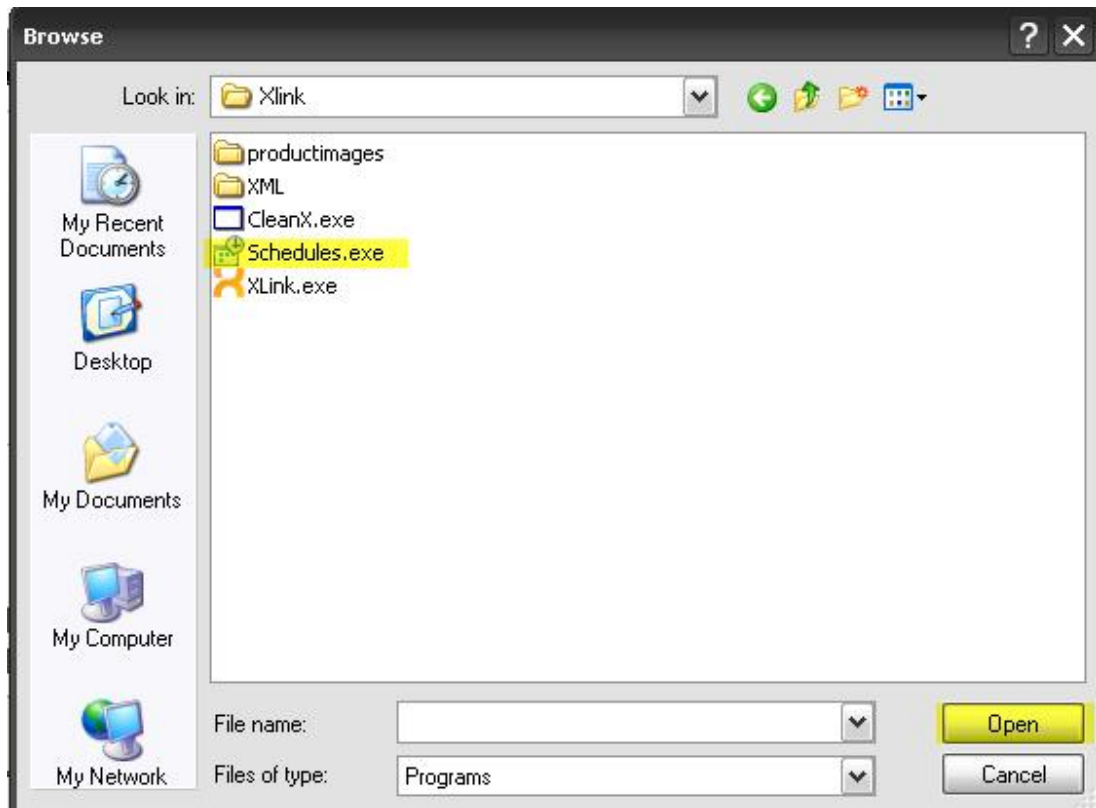
Name the task (for example Xlink) and choose properties to configure.



Click browse



Locate the schedules.exe file



And click open

You can then use windows to schedule the task as often as you like.

We recommend a minimum 1 per 24 hours and a maximum 1 per hour.

For more information and support please contact [support@excommerce.com](mailto:support@excommerce.com)